

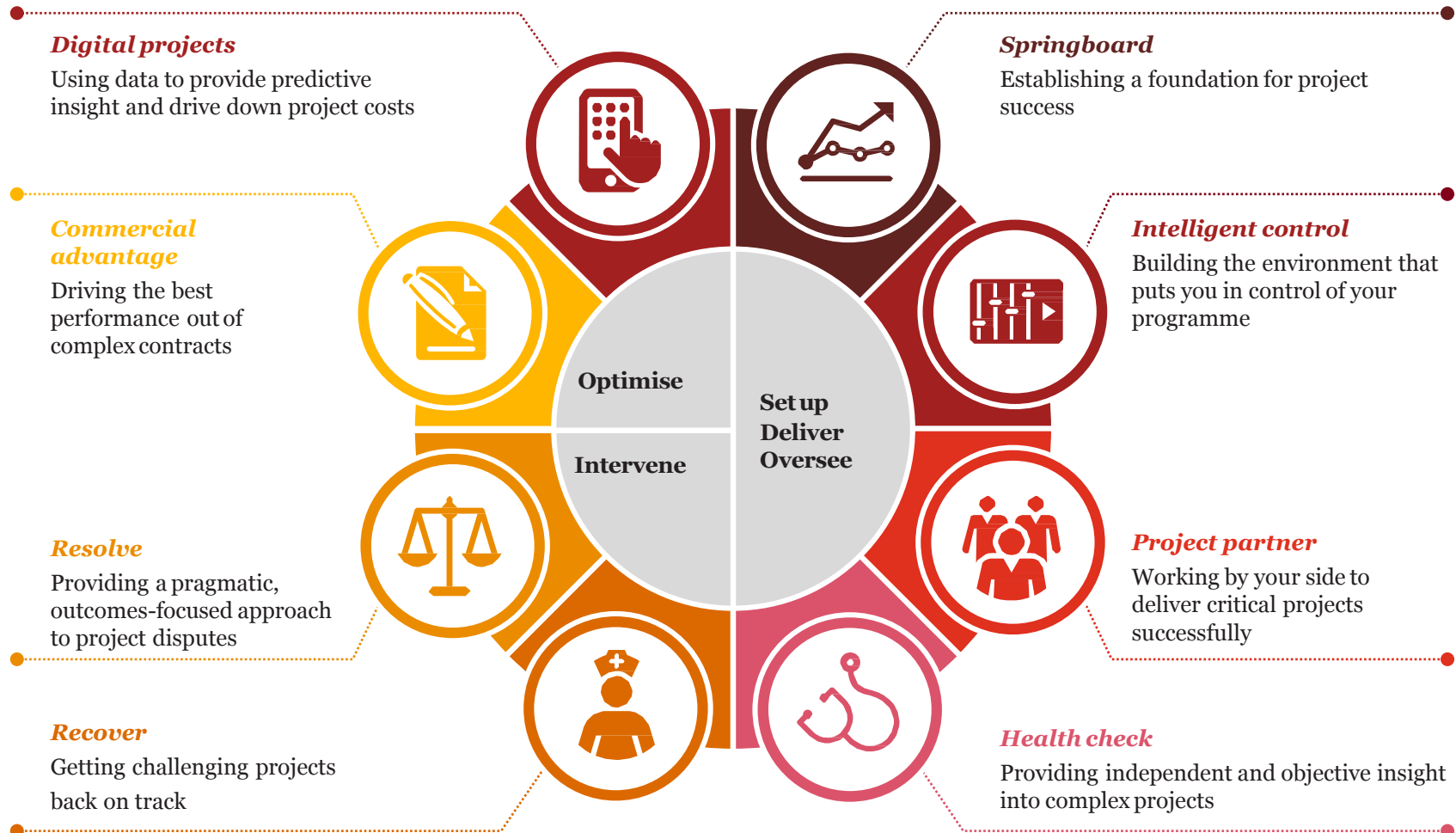
[www.pwc.co.uk/projectdelivery](http://www.pwc.co.uk/projectdelivery)

*Making every  
project a success*  
November 2016

---

# *Video*

# How do we address challenges our clients face?



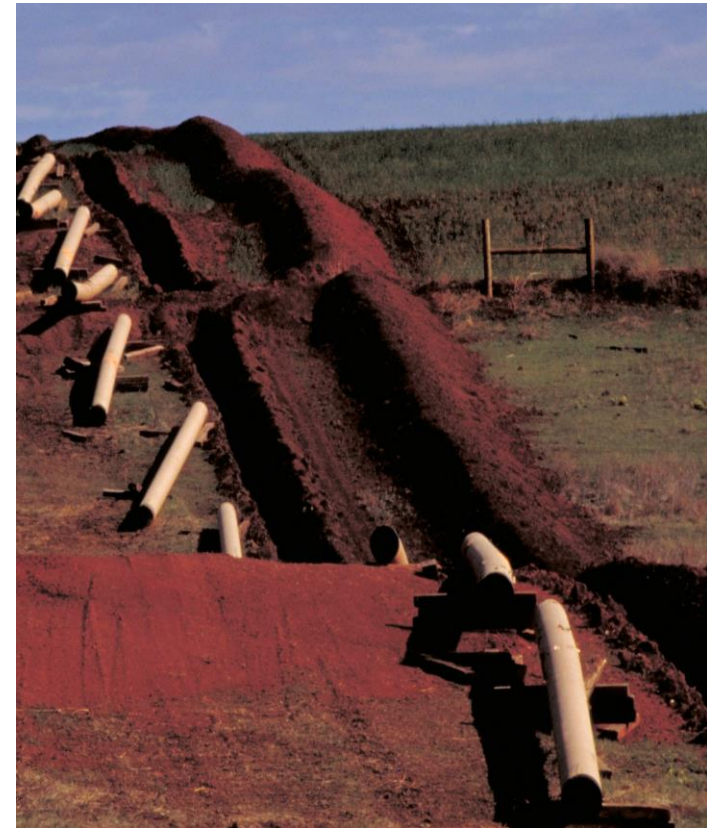
# Springboard

## Establishing a foundation for project success

The early stages of a major project are critical to its likelihood of being delivered successfully. Organisations need to take control – a real challenge when embarking on a project for the first time, or taking on a project of unfamiliar complexity.

**Springboard** gears up organisations to deliver their most important projects successfully by:

- **Defining the project**
- **Getting in control**
- **Building the organisation**



## Benefits



A clear path  
to success



Threats  
flagged early

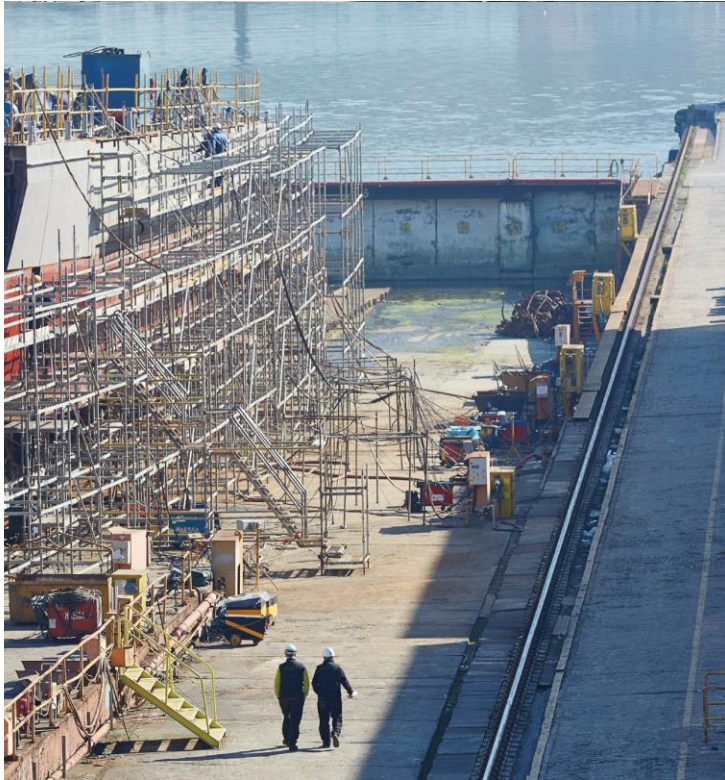


The capability  
and structures to deliver



Confidence  
in readiness

# Intelligent control



## Building the environment that puts you in control of your programme

When visibility of capital programme performance is scarce, unreliable or conflicting, stakeholder confidence and trust can be quickly lost. Programmes can derail and organisations can start to feel like passengers.

**Intelligent Control** is our proven approach that puts organisations back in control of their major programmes. It is based on three key principles:

- **Establish control**
- **Restore confidence**
- **Enable decisions**

### Benefits



Visibility of performance



A robust plan



Agility and responsiveness



Stakeholder confidence

# *Project partner*

## Working by your side to deliver critical projects successfully

When an urgent issue arises, organisations need to respond effectively and rapidly. People are pulled out of day-to-day roles and into project teams – sometimes with limited project leadership experience – which puts success under threat.

*Project partner* provides an immediate injection of skilled and experienced project and programme leadership capability that is essential in delivering business critical outcomes. It is based on our set up, support, sustain model:

- **Set up**
- **Support**
- **Sustain**

### Benefits



The right expertise to deliver



The essential tools and process



Knowledge transfer to your people



Greater likelihood of success





# Health check



## Providing independent and objective insight into complex projects

Major projects present significant risks and it is often difficult to understand if they are on track. An optimistic view is often reported, leading to poor decisions and missed opportunities to intervene. An independent perspective is essential.

With **Health check** we provide independent and objective challenge to complex projects, helping stakeholders understand:

- **Actual performance**
- **Risks and exposure**
- **Capability to deliver**
- **Changes needed**

## Benefits



# Recover

## Getting challenging projects back on track

When a major project is going wrong, every decision is critical. Establishing what is going on, what happened and what needs to be put right – quickly – is vital to getting a project back on track.

**Recover** provides organisations with the objective insight they need to make clear, informed decisions. It helps project owners and their stakeholders answer the three critical questions when a project is in crisis:

- **What is the current situation?**
- **What caused it?**
- **What needs to change?**



## Benefits



Clarity of the root causes of issues



A plan to get back on track



Opportunities to de-risk



Stakeholder confidence restored



# Resolve



## Providing a pragmatic, outcomes-focused approach to project disputes

When contractual disagreements arise on major projects, decisions need to be driven objectively and by the facts to maximise the chances of success. More often impulse and emotion take over, compromising outcomes and risking reputational and financial damage.

**Resolve** adopts a pragmatic and rigorous business case approach to contractual disputes. Our three step approach helps clients and contractors make better dispute decisions and position themselves for success:

- **Establish the facts**
- **Strategise**
- **Articulate the case**

### Benefits



Analysis that stands up scrutiny



Clarity on the facts and your position



Coherent, clear and compelling argument



More successful outcomes

# Commercial advantage

## Driving the best performance out of complex contracts

Large contracts are part of the fabric of major projects, but they often fail to deliver on the promise of managing risk and can erode considerable value – threatening objectives, increasing cost and derailing strategy.

**Commercial advantage** brings the acumen and insight needed to drive the best performance and results out of complex contracts. Our approach focuses on identifying and addressing high impact areas quickly, following our proven framework:

- **Assess**
- **Target**
- **Remediate**

### Benefits



Increased commercial value



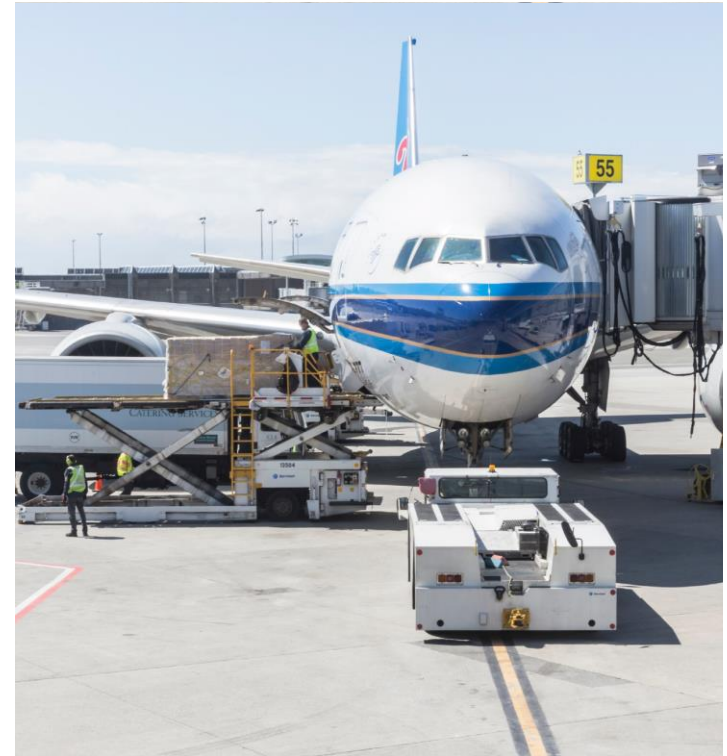
Cost reduction



Lower commercial risk



Knowledge and skills transfer



# Digital projects



## Using data to provide predictive insight and drive down project costs

The emergence of digital technologies and the abundance of data in the project environment creates opportunities for project owners to unlock insights and reduce costs.

**Digital projects** helps projects make the most of their data. By providing end-to-end partnering, supported by enhanced data analytics and technical capabilities, we are able to:

- **De-risk programmes**
- **Bring predictive insight**

### Benefits



Predictive insight



Early warning of potential issues



Lower whole life costs



Greater confidence in outcomes

# Digital projects

We understand how to generate **business value** from **technology**. Value creation requires **integration** and **business transformation**. We can instil **confidence** through the bespoke selection and integration of **digital technologies** and **enhanced data analytics** to bring powerful **insights** and **control**.

Our **focus** and **value** is on:

- Exploiting the **data explosion**
- Providing **transparency** in project delivery
- Establishing real project performance **insight**
- Enabling earlier, better **interventions**

.... a new expectation for capital project delivery.



---

*Visit us at [www.pwc.co.uk/projectdelivery](http://www.pwc.co.uk/projectdelivery)  
to find out more*

This publication has been prepared for general guidance on matters of interest only, and does not constitute professional advice. You should not act upon the information contained in this publication without obtaining specific professional advice. No representation or warranty (express or implied) is given as to the accuracy or completeness of the information contained in this publication, and, to the extent permitted by law, PricewaterhouseCoopers LLP, its members, employees and agents do not accept or assume any liability, responsibility or duty of care for any consequences of you or anyone else acting, or refraining to act, in reliance on the information contained in this publication or for any decision based on it.

© 2016 PricewaterhouseCoopers LLP. All rights reserved. In this document, "PwC" refers to the UK member firm, which is a member firm of PricewaterhouseCoopers International Limited, each member firm of which is a separate legal entity.